




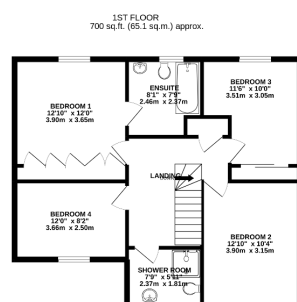
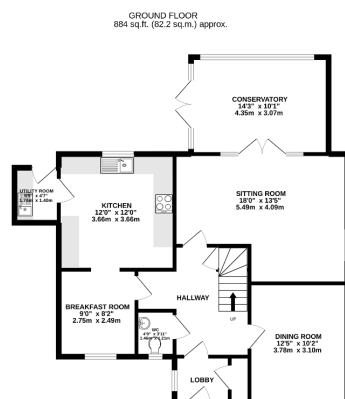
11 Warene Close, Framlingham

Guide Price £550,000

 4  2  3



- Entrance Lobby and Hall
- Dining Room
- Utility Room and downstairs Cloakroom
- Three further Double Bedrooms
- Garden
- Sitting Room and Conservatory
- Kitchen/Breakfast Room
- Main Bedroom with En Suite Bathroom
- Family Shower Room
- Double Garage and parking



TOTAL FLOOR AREA: 1585 sq.ft. (147.2 sq.m.) approx.
While every attempt has been made to ensure the accuracy of the figures contained here, measurements of doors, windows, rooms and any other items are approximate and no responsibility is taken for any error, omission or mis-statement. This plan is for guidance purposes only and should be used as such by any prospective purchaser. The services, systems and appliances shown here have not been tested and no guarantee as to their operability or efficiency can be given.
Made with Neatmap ©2022

An immaculately presented **FOUR DOUBLE BEDROOM** property in the heart of Framlingham with **THREE RECEPTION ROOMS ** GARDEN ** DOUBLE GARAGE AND PARKING ****

PLEASE RING FOR AN APPOINTMENT ON THE OPEN DAY OF WEDNESDAY 14TH SEPTEMBER BETWEEN 11AM AND 1PM